

## Utepils Brewing

### Happy Pack Variety Pack

#### Lot # "Expires 10/13/26"

- Raspberry 10mg      Batch: Canned 10/13/2025 5285
- Orange 10mg        Batch: Canned 10/15/2025 5288
- Cherry 10mg        Batch: Expires 1/15/2027
- Lime 10mg          Batch: Canned on 1/12/2026 OR Expires on 1/12/2027

## Utepils Brewing

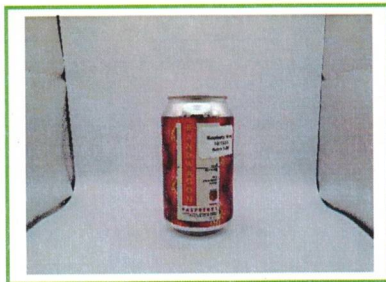
255 Thomas Ave N, Suite 700  
Minneapolis, MN 55405  
eric.harper@utepilsbrewing.com  
(612) 249-7800

Sample: 2510AIT0807.1530

Strain: N/A  
Batch#: Batch 10/13/25 5286; Batch Size: g  
Sample Received: 10/14/2025; Report Created: 10/15/2025

## Raspberry 10mg

Ingestible, Beverage



**0.003%**  
11.3 mg/container  
5.6 mg/serving  
**Total THC**

**<LOQ**  
**<LOQ**  
**<LOQ**  
**Total CBD**

**0.003%**  
11.3 mg/container  
5.6 mg/serving  
**Total Cannabinoids**

## Cannabinoids

Date Tested: 10/15/2025

Analytes	%	mg/g	mg/ml	mg/serving	LOQ
CBC	<LOQ	<LOQ	<LOQ	<LOQ	0.001
CBD	<LOQ	<LOQ	<LOQ	<LOQ	0.001
CBDa	<LOQ	<LOQ	<LOQ	<LOQ	0.001
CBDV	<LOQ	<LOQ	<LOQ	<LOQ	0.001
CBG	<LOQ	<LOQ	<LOQ	<LOQ	0.001
CBGa	<LOQ	<LOQ	<LOQ	<LOQ	0.001
CBL	<LOQ	<LOQ	<LOQ	<LOQ	0.001
CBN	<LOQ	<LOQ	<LOQ	<LOQ	0.001
Δ8-THC	<LOQ	<LOQ	<LOQ	<LOQ	0.001
Δ9-THC	0.003	0.032	0.032	5.632	0.001
THCa	<LOQ	<LOQ	<LOQ	<LOQ	0.001
THCVa	<LOQ	<LOQ	<LOQ	<LOQ	0.001


Method: HPLC  
Total THC = THCa \* 0.877 + Δ9-THC  
Total CBD = CBDa \* 0.877 + CBD

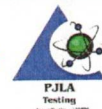
Total Cannabinoids represents the sum of all cannabinoids in the table above.  
Results are reported on a dry weight basis: Cannabinoid % / (1.0 - moisture content % / 100) = Dry weight cannabinoids %  
LOQ = Limit of Quantitation

## Summary

4150 98th Ave S  
Fargo, ND  
(888) 897-4367  
www.hempinspection.com



  
Bradley Towey  
Senior Analytical Chemist



Confident LIMS  
All Rights Reserved  
(866) 506-5866

This product has been tested by Adams Independent Testing using valid testing methodologies. Values reported apply only to the product tested and only as the sample was received. Adams Independent Testing makes no claims as to the efficacy, safety, or other risks associated with any detected or nondetected level of any compounds reported herein. This Certificate shall not be reproduced except in full, without the written approval of Adams Independent Testing. Test results that are Pass/Fail are reported using the Oregon Health Authority, Public Health Division - Chapter 333-007-0320, effective 1/1/2021. Results above the Limit will be considered Fail and will be in red. This is for informational purposes only and can be changed upon request. Measurement Uncertainty is not used for pass/fail conditions but available upon request.

## Utepils Brewing

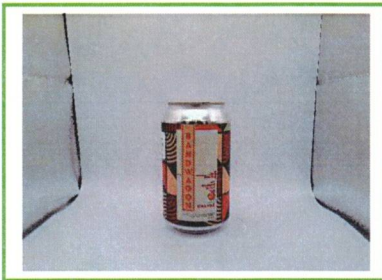
255 Thomas Ave N, Suite 700  
Minneapolis, MN 55405  
eric.harper@utepilsbrewing.com  
(612) 249-7800

Sample: 2510AIT0838.1588

Strain: N/A  
Batch#: Batch 5288 10/15/25; Batch Size: g  
Sample Received: 10/27/2025; Report Created: 10/28/2025

## Bandwagon Orange 10mg

Ingestible, Beverage



**0.003%**  
10.5 mg/container  
5.3 mg/serving  
**Total THC**

**<LOQ**  
**<LOQ**  
**<LOQ**  
**Total CBD**

**0.003%**  
10.5 mg/container  
5.3 mg/serving  
**Total Cannabinoids**

## Cannabinoids Date Tested: 10/28/2025

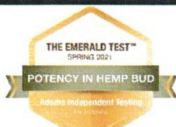
Analytes	%	mg/g	mg/ml	mg/serving	LOQ
CBC	<LOQ	<LOQ	<LOQ	<LOQ	0.001
CBD	<LOQ	<LOQ	<LOQ	<LOQ	0.001
CBDa	<LOQ	<LOQ	<LOQ	<LOQ	0.001
CBDV	<LOQ	<LOQ	<LOQ	<LOQ	0.001
CBG	<LOQ	<LOQ	<LOQ	<LOQ	0.001
CBGa	<LOQ	<LOQ	<LOQ	<LOQ	0.001
CBL	<LOQ	<LOQ	<LOQ	<LOQ	0.001
CBN	<LOQ	<LOQ	<LOQ	<LOQ	0.001
Δ8-THC	<LOQ	<LOQ	<LOQ	<LOQ	0.001
Δ9-THC	0.003	0.030	0.030	5.260	0.001
THCa	<LOQ	<LOQ	<LOQ	<LOQ	0.001
THCVa	<LOQ	<LOQ	<LOQ	<LOQ	0.001


Method: HPLC  
Total THC = THCa \* 0.877 + Δ9-THC  
Total CBD = CBDa \* 0.877 + CBD

Total Cannabinoids represents the sum of all cannabinoids in the table above.  
Results are reported on a dry weight basis: Cannabinoid % / (1.0 - moisture content % / 100) = Dry weight cannabinoids %  
LOQ = Limit of Quantitation

## Summary

4150 98th Ave S  
Fargo, ND  
(888) 897-4367  
www.hempinspection.com



  
Bradley Towey

Senior Analytical Chemist



Confident LIMS  
All Rights Reserved  
(866) 506-5866

This product has been tested by Adams Independent Testing using valid testing methodologies. Values reported apply only to the product tested and only as the sample was received. Adams Independent Testing makes no claims as to the efficacy, safety, or other risks associated with any detected or nondetected level of any compounds reported herein. This Certificate shall not be reproduced except in full, without the written approval of Adams Independent Testing. Test results that are Pass/Fail are reported using the Oregon Health Authority, Public Health Division - Chapter 333-007-0320, effective 1/1/2021. Results above the Limit will be considered Fail and will be in red. This is for informational purposes only and can be changed upon request. Measurement Uncertainty is not used for pass/fail conditions but available upon request.

## Utepils Brewing

255 Thomas Ave N, Suite 700  
Minneapolis, MN 55405  
eric.harper@utepilsbrewing.com  
(612) 249-7800

Sample: 2601AIT0033.0067

Strain: N/A  
Batch#: Expires 1/15/27; Batch Size: g  
Sample Received: 01/16/2026; Report Created: 01/23/2026

## Bandwagon Cherry 10mg

Ingestible, Beverage



**0.003%**  
9.9 mg/container  
9.9 mg/serving

**Total THC**

**<LOQ**  
<LOQ  
<LOQ

**Total CBD**

**0.003%**  
9.9 mg/container  
9.9 mg/serving

**Total Cannabinoids**

## Cannabinoids

Date Tested: 01/20/2026

Analytes	%	mg/g	mg/ml	mg/serving	LOQ
CBC	<LOQ	<LOQ	<LOQ	<LOQ	0.001
CBD	<LOQ	<LOQ	<LOQ	<LOQ	0.001
CBDa	<LOQ	<LOQ	<LOQ	<LOQ	0.001
CBDV	<LOQ	<LOQ	<LOQ	<LOQ	0.001
CBG	<LOQ	<LOQ	<LOQ	<LOQ	0.001
CBGa	<LOQ	<LOQ	<LOQ	<LOQ	0.001
CBL	<LOQ	<LOQ	<LOQ	<LOQ	0.001
CBN	<LOQ	<LOQ	<LOQ	<LOQ	0.001
Δ8-THC	<LOQ	<LOQ	<LOQ	<LOQ	0.001
Δ9-THC	0.003	0.028	0.028	9.857	0.001
THCa	<LOQ	<LOQ	<LOQ	<LOQ	0.001
THCVa	<LOQ	<LOQ	<LOQ	<LOQ	0.001

Method: HPLC  
Total THC = THCa \* 0.877 + Δ9-THC  
Total CBD = CBDa \* 0.877 + CBD

Total Cannabinoids represents the sum of all cannabinoids in the table above.  
Results are reported on a dry weight basis: Cannabinoid % / (1.0 - moisture content % / 100) = Dry weight cannabinoids %  
LOQ = Limit of Quantitation

## Summary

**Pass**

Microbials

4150 98th Ave S  
 Fargo, ND  
(888) 897-4367  
www.hempinspection.com



*John Schmidt*

John Schmidt  
Analytical Chemist



Confident LIMS  
All Rights Reserved  
(866) 506-5866

This product has been tested by Adams Independent Testing using valid testing methodologies. Values reported apply only to the product tested and only as the sample was received. Adams Independent Testing makes no claims as to the efficacy, safety, or other risks associated with any detected or nondetected level of any compounds reported herein. This Certificate shall not be reproduced except in full, without the written approval of Adams Independent Testing. Test results that are Pass/Fail are reported using the Oregon Health Authority, Public Health Division - Chapter 333-007-0320, effective 1/1/2021. Results above the Limit will be considered Fail and will be in red. This is for informational purposes only and can be changed upon request. Measurement Uncertainty is not used for pass/fail conditions but available upon request.

## Utepils Brewing

255 Thomas Ave N, Suite 700  
Minneapolis, MN 55405  
eric.harper@utepilsbrewing.com  
(612) 249-7800

Sample: 2601AIT0033.0067

Strain: N/A  
Batch#: Expires 1/15/27; Batch Size: g  
Sample Received: 01/16/2026; Report Created: 01/23/2026

## Bandwagon Cherry 10mg

Ingestible, Beverage



## Microbials

Pass

Date Tested: 01/20/2026

Analyte	Limit	Result	Status
	CFU/g	CFU/g	
Salmonella	1	Not Detected	Not Present
Shiga Toxin-producing E. coli (STEC)	1	Not Detected	Not Present
Bile-Tolerant Gram-Negative Bacteria	100	<LOQ	Not Present

Method: qPCR

4150 98th Ave S  
Fargo, ND  
(888) 897-4367  
www.hempinspection.com



John Schmidt  
Analytical Chemist

Confident LIMS  
All Rights Reserved  
(866) 506-5866

This product has been tested by Adams Independent Testing using valid testing methodologies. Values reported apply only to the product tested and only as the sample was received. Adams Independent Testing makes no claims as to the efficacy, safety, or other risks associated with any detected or nondetected level of any compounds reported herein. This Certificate shall not be reproduced except in full, without the written approval of Adams Independent Testing. Test results that are Pass/Fail are reported using the Oregon Health Authority, Public Health Division - Chapter 333-007-0320, effective 1/1/2021. Results above the Limit will be considered Fail and will be in red. This is for informational purposes only and can be changed upon request. Measurement Uncertainty is not used for pass/fail conditions but available upon request.

## Utepils Brewing

255 Thomas Ave N, Suite 700  
Minneapolis, MN 55405  
eric.harper@utepilsbrewing.com  
(612) 249-7800

Sample: 2601AIT0033.0066

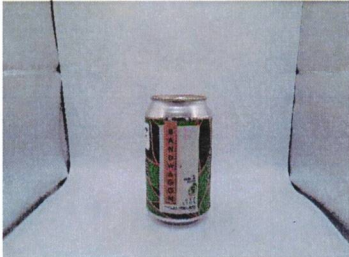
Strain: N/A

Batch#: Canned on 1/12/2026 Expires on 1/12/2027; Batch Size: g  
Sample Received: 01/16/2026; Report Created: 04/09/2026

## Bandwagon Key Lime 10mg

Ingestible, Beverage



	<p><b>0.003%</b></p> <p>10.3 mg/container 10.3 mg/serving</p> <p><b>Total THC</b></p>	<p><b>&lt;LOQ</b></p> <p>&lt;LOQ &lt;LOQ</p> <p><b>Total CBD</b></p>	<p><b>0.003%</b></p> <p>10.3 mg/container 10.3 mg/serving</p> <p><b>Total Cannabinoids</b></p>
---	---	--	--

## Cannabinoids

Date Tested: 01/20/2026

Analytes	%	mg/g	mg/ml	mg/serving	LOQ
CBC	<LOQ	<LOQ	<LOQ	<LOQ	0.001
CBD	<LOQ	<LOQ	<LOQ	<LOQ	0.001
CBDa	<LOQ	<LOQ	<LOQ	<LOQ	0.001
CBDV	<LOQ	<LOQ	<LOQ	<LOQ	0.001
CBG	<LOQ	<LOQ	<LOQ	<LOQ	0.001
CBGa	<LOQ	<LOQ	<LOQ	<LOQ	0.001
CBL	<LOQ	<LOQ	<LOQ	<LOQ	0.001
CBN	<LOQ	<LOQ	<LOQ	<LOQ	0.001
Δ8-THC	<LOQ	<LOQ	<LOQ	<LOQ	0.001
Δ9-THC	0.003	0.029	0.029	10.321	0.001
THCa	<LOQ	<LOQ	<LOQ	<LOQ	0.001
THCVa	<LOQ	<LOQ	<LOQ	<LOQ	0.001

Method: HPLC  
Total THC = THCa \* 0.877 + Δ9-THC  
Total CBD = CBDa \* 0.877 + CBD

Total Cannabinoids represents the sum of all cannabinoids in the table above.  
Results are reported on a dry weight basis: Cannabinoid % / (1.0 - moisture content % / 100) = Dry weight cannabinoids %  
LOQ = Limit of Quantitation

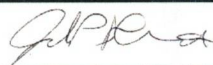
## Summary

**Pass**

Microbials

4150 98th Ave S  
Fargo, ND  
(888) 897-4367  
www.hempinspection.com





John Schmidt  
Analytical Chemist



Confident LIMS  
All Rights Reserved  
(866) 506-5866

This product has been tested by Adams Independent Testing using valid testing methodologies. Values reported apply only to the product tested and only as the sample was received. Adams Independent Testing makes no claims as to the efficacy, safety, or other risks associated with any detected or nondetected level of any compounds reported herein. This Certificate shall not be reproduced except in full, without the written approval of Adams Independent Testing. Test results that are Pass/Fail are reported using the Oregon Health Authority, Public Health Division - Chapter 333-007-0320, effective 1/1/2021. Results above the Limit will be considered Fail and will be in red. This is for informational purposes only and can be changed upon request. Measurement Uncertainty is not used for pass/fail conditions but available upon request.

## Utepils Brewing

255 Thomas Ave N, Suite 700  
Minneapolis, MN 55405  
eric.harper@utepilsbrewing.com  
(612) 249-7800

Sample: 2601AIT0033.0066

Strain: N/A  
Batch#: Canned on 1/12/2026 Expires on 1/12/2027; Batch Size: g  
Sample Received: 01/16/2026; Report Created: 04/09/2026

## Bandwagon Key Lime 10mg

Ingestible, Beverage



## Microbials

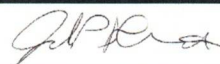
Pass

Date Tested: 01/20/2026

Analyte	Limit	Result	Status
Salmonella	1 CFU/g	Not Detected	Not Present
Shiga Toxin-producing E. coli (STEC)	1 CFU/g	Not Detected	Not Present
Bile-Tolerant Gram-Negative Bacteria	100	<LOQ	Not Present

Method: qPCR

4150 98th Ave S  
Fargo, ND  
(888) 897-4367  
www.hempinspection.com



John Schmidt  
Analytical Chemist

Confident LIMS  
All Rights Reserved  
(866) 506-5866

This product has been tested by Adams Independent Testing using valid testing methodologies. Values reported apply only to the product tested and only as the sample was received. Adams Independent Testing makes no claims as to the efficacy, safety, or other risks associated with any detected or nondetected level of any compounds reported herein. This Certificate shall not be reproduced except in full, without the written approval of Adams Independent Testing. Test results that are Pass/Fail are reported using the Oregon Health Authority, Public Health Division - Chapter 333-007-0320, effective 1/1/2021. Results above the Limit will be considered Fail and will be in red. This is for informational purposes only and can be changed upon request. Measurement Uncertainty is not used for pass/fail conditions but available upon request.