

Utepils Brewing

Happy Pack Variety Pack

Lot # "Expires 08/05/26"

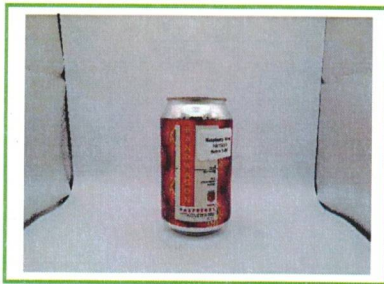
- Raspberry 10mg Batch: Canned 10/13/2025 5285
- Orange 10mg Batch: Canned 08/05/2025 5217
- Cherry 10mg Batch: Expires 1/15/2027
- Lime 10mg Batch: Canned on 1/12/2026 OR Expires on 1/12/2027

Utepils Brewing
255 Thomas Ave N, Suite 700
Minneapolis, MN 55405
eric.harper@utepilsbrewing.com
(612) 249-7800

Sample: 2510AIT0807.1530

Strain: N/A
Batch#: Batch 10/13/25 5286; Batch Size: g
Sample Received: 10/14/2025; Report Created: 10/15/2025

Raspberry 10mg
Ingestible, Beverage



0.003%
11.3 mg/container
5.6 mg/serving
Total THC

<LOQ
<LOQ
<LOQ
Total CBD

0.003%
11.3 mg/container
5.6 mg/serving
Total Cannabinoids

Cannabinoids

Date Tested: 10/15/2025

Analytes	%	mg/g	mg/ml	mg/serving	LOQ
CBC	<LOQ	<LOQ	<LOQ	<LOQ	0.001
CBD	<LOQ	<LOQ	<LOQ	<LOQ	0.001
CBDa	<LOQ	<LOQ	<LOQ	<LOQ	0.001
CBDV	<LOQ	<LOQ	<LOQ	<LOQ	0.001
CBG	<LOQ	<LOQ	<LOQ	<LOQ	0.001
CBGa	<LOQ	<LOQ	<LOQ	<LOQ	0.001
CBL	<LOQ	<LOQ	<LOQ	<LOQ	0.001
CBN	<LOQ	<LOQ	<LOQ	<LOQ	0.001
Δ8-THC	<LOQ	<LOQ	<LOQ	<LOQ	0.001
Δ9-THC	0.003	0.032	0.032	5.632	0.001
THCa	<LOQ	<LOQ	<LOQ	<LOQ	0.001
THCVa	<LOQ	<LOQ	<LOQ	<LOQ	0.001


Method: HPLC
Total THC = THCa * 0.877 + Δ9-THC
Total CBD = CBDa * 0.877 + CBD

Total Cannabinoids represents the sum of all cannabinoids in the table above.
Results are reported on a dry weight basis: Cannabinoid % / (1.0 - moisture content % / 100) = Dry weight cannabinoids %
LOQ = Limit of Quantitation

Summary

4150 98th Ave S
Fargo, ND
(888) 897-4367
www.hempinspection.com




Bradley Towey

Senior Analytical Chemist



Confident LIMS
All Rights Reserved
(866) 506-5866

This product has been tested by Adams Independent Testing using valid testing methodologies. Values reported apply only to the product tested and only as the sample was received. Adams Independent Testing makes no claims as to the efficacy, safety, or other risks associated with any detected or nondetected level of any compounds reported herein. This Certificate shall not be reproduced except in full, without the written approval of Adams Independent Testing. Test results that are Pass/Fail are reported using the Oregon Health Authority, Public Health Division - Chapter 333-007-0320, effective 1/1/2021. Results above the Limit will be considered Fail and will be in red. This is for informational purposes only and can be changed upon request. Measurement Uncertainty is not used for pass/fail conditions but available upon request.

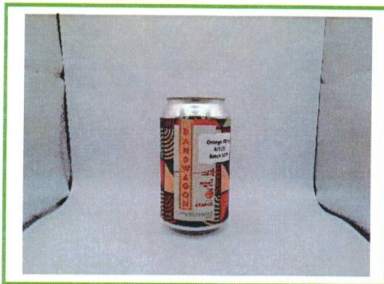
Utepils Brewing

255 Thomas Ave N, Suite 700
Minneapolis, MN 55405
eric.harper@utepilsbrewing.com
(612) 249-7800

Sample: 2510AIT0807.1533

Strain: N/A
Batch#: Batch 8/5/25 5217; Batch Size: g
Sample Received: 10/14/2025; Report Created: 10/15/2025

Orange 10mg
Ingestible, Beverage



0.003%
9.3 mg/container
4.6 mg/serving
Total THC

0.000%
0.8 mg/container
0.4 mg/serving
Total CBD

0.003%
10.0 mg/container
5.0 mg/serving
Total Cannabinoids

Cannabinoids

Date Tested: 10/15/2025

Analytes	%	mg/g	mg/ml	mg/serving	LOQ
CBC	<LOQ	<LOQ	<LOQ	<LOQ	0.001
CBD	0.000	0.002	0.002	0.393	0.000
CBDa	<LOQ	<LOQ	<LOQ	<LOQ	0.001
CBDV	<LOQ	<LOQ	<LOQ	<LOQ	0.001
CBG	<LOQ	<LOQ	<LOQ	<LOQ	0.001
CBGa	<LOQ	<LOQ	<LOQ	<LOQ	0.001
CBL	<LOQ	<LOQ	<LOQ	<LOQ	0.001
CBN	<LOQ	<LOQ	<LOQ	<LOQ	0.001
Δ8-THC	<LOQ	<LOQ	<LOQ	<LOQ	0.001
Δ9-THC	0.003	0.026	0.026	4.630	0.001
THCa	<LOQ	<LOQ	<LOQ	<LOQ	0.001
THCVa	<LOQ	<LOQ	<LOQ	<LOQ	0.001

Method: HPLC
Total THC = THCa * 0.877 + Δ9-THC
Total CBD = CBDa * 0.877 + CBD

Total Cannabinoids represents the sum of all cannabinoids in the table above.
Results are reported on a dry weight basis: Cannabinoid % / (1.0 - moisture content % / 100) = Dry weight cannabinoids %
LOQ = Limit of Quantitation

Summary

4150 98th Ave S
Fargo, ND
(888) 897-4367
www.hempinspection.com



Bradley Towey

Senior Analytical Chemist



Confident LIMS
All Rights Reserved
(866) 506-5886

This product has been tested by Adams Independent Testing using valid testing methodologies. Values reported apply only to the product tested and only as the sample was received. Adams Independent Testing makes no claims as to the efficacy, safety, or other risks associated with any detected or nondetected level of any compounds reported herein. This Certificate shall not be reproduced except in full, without the written approval of Adams Independent Testing. Test results that are Pass/Fail are reported using the Oregon Health Authority, Public Health Division - Chapter 333-007-0320, effective 1/1/2021. Results above the Limit will be considered Fail and will be in red. This is for informational purposes only and can be changed upon request. Measurement Uncertainty is not used for pass/fail conditions but available upon request.


Utepils Brewing
255 Thomas Ave N, Suite 700
Minneapolis, MN 55405
eric.harper@utepilsbrewing.com
(612) 249-7800

Sample: 2601AIT0033.0067

Strain: N/A
Batch#: Expires 1/15/27; Batch Size: g
Sample Received: 01/16/2026; Report Created: 01/23/2026

Bandwagon Cherry 10mg
Ingestible, Beverage



	<p>0.003% 9.9 mg/container 9.9 mg/serving</p> <p>Total THC</p>	<p><LOQ <LOQ <LOQ</p> <p>Total CBD</p>	<p>0.003% 9.9 mg/container 9.9 mg/serving</p> <p>Total Cannabinoids</p>
---	--	---	---

Cannabinoids Date Tested: 01/20/2026

Analytes	%	mg/g	mg/ml	mg/serving	LOQ
CBC	<LOQ	<LOQ	<LOQ	<LOQ	0.001
CBD	<LOQ	<LOQ	<LOQ	<LOQ	0.001
CBDa	<LOQ	<LOQ	<LOQ	<LOQ	0.001
CBDV	<LOQ	<LOQ	<LOQ	<LOQ	0.001
CBG	<LOQ	<LOQ	<LOQ	<LOQ	0.001
CBGa	<LOQ	<LOQ	<LOQ	<LOQ	0.001
CBL	<LOQ	<LOQ	<LOQ	<LOQ	0.001
CBN	<LOQ	<LOQ	<LOQ	<LOQ	0.001
Δ8-THC	<LOQ	<LOQ	<LOQ	<LOQ	0.001
Δ9-THC	0.003	0.028	0.028	9.857	0.001
THCa	<LOQ	<LOQ	<LOQ	<LOQ	0.001
THCVa	<LOQ	<LOQ	<LOQ	<LOQ	0.001

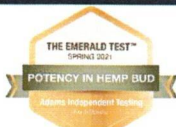
Method: HPLC
Total THC = THCa * 0.877 + Δ9-THC
Total CBD = CBDa * 0.877 + CBD

Total Cannabinoids represents the sum of all cannabinoids in the table above.
Results are reported on a dry weight basis: Cannabinoid % / (1.0 - moisture content % / 100) = Dry weight cannabinoids %
LOQ = Limit of Quantitation

Summary

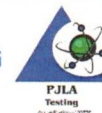
Pass
Microbials

4150 98th Ave S
 Fargo, ND
(888) 897-4367
www.hempinspection.com



John Schmidt

John Schmidt
Analytical Chemist



Confident LIMS
All Rights Reserved
(866) 506-5866

This product has been tested by Adams Independent Testing using valid testing methodologies. Values reported apply only to the product tested and only as the sample was received. Adams Independent Testing makes no claims as to the efficacy, safety, or other risks associated with any detected or nondetected level of any compounds reported herein. This Certificate shall not be reproduced except in full, without the written approval of Adams Independent Testing. Test results that are Pass/Fail are reported using the Oregon Health Authority, Public Health Division - Chapter 333-007-0320, effective 1/1/2021. Results above the Limit will be considered Fail and will be in red. This is for informational purposes only and can be changed upon request. Measurement Uncertainty is not used for pass/fail conditions but available upon request.

Utepils Brewing
255 Thomas Ave N, Suite 700
Minneapolis, MN 55405
eric.harper@utepilsbrewing.com
(612) 249-7800

Sample: 2601AIT0033.0067

Strain: N/A
Batch#: Expires 1/15/27; Batch Size: g
Sample Received: 01/16/2026; Report Created: 01/23/2026

Bandwagon Cherry 10mg
Ingestible, Beverage



Microbials

Pass

Date Tested: 01/20/2026

Analyte	Limit	Result	Status
Salmonella	CFU/g	CFU/g	
Shiga Toxin-producing E. coli (STEC)	1	Not Detected	Not Present
Bile-Tolerant Gram-Negative Bacteria	100	<LOQ	Not Present

Method: qPCR

4150 98th Ave S
Fargo, ND
(888) 897-4367
www.hempinspection.com



John Schmidt
Analytical Chemist

Confident LIMS
All Rights Reserved
(866) 506-5866

This product has been tested by Adams Independent Testing using valid testing methodologies. Values reported apply only to the product tested and only as the sample was received. Adams Independent Testing makes no claims as to the efficacy, safety, or other risks associated with any detected or nondetected level of any compounds reported herein. This Certificate shall not be reproduced except in full, without the written approval of Adams Independent Testing. Test results that are Pass/Fail are reported using the Oregon Health Authority, Public Health Division - Chapter 333-007-0320, effective 1/1/2021. Results above the Limit will be considered Fail and will be in red. This is for informational purposes only and can be changed upon request. Measurement Uncertainty is not used for pass/fail conditions but available upon request.

Utepils Brewing

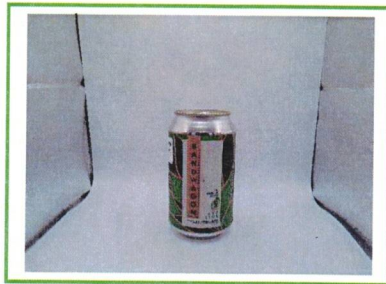
255 Thomas Ave N, Suite 700
Minneapolis, MN 55405
eric.harper@utepilsbrewing.com
(612) 249-7800

Sample: 2601AIT0033.0066

Strain: N/A
Batch#: Canned on 1/12/2026 Expires on 1/12/2027; Batch Size: g
Sample Received: 01/16/2026; Report Created: 04/09/2026

Bandwagon Key Lime 10mg

Ingestible, Beverage



0.003%
10.3 mg/container
10.3 mg/serving
Total THC

<LOQ
<LOQ
<LOQ
Total CBD

0.003%
10.3 mg/container
10.3 mg/serving
Total Cannabinoids

Cannabinoids

Date Tested: 01/20/2026

Analytes	%	mg/g	mg/ml	mg/serving	LOQ
CBC	<LOQ	<LOQ	<LOQ	<LOQ	0.001
CBD	<LOQ	<LOQ	<LOQ	<LOQ	0.001
CBDa	<LOQ	<LOQ	<LOQ	<LOQ	0.001
CBDV	<LOQ	<LOQ	<LOQ	<LOQ	0.001
CBG	<LOQ	<LOQ	<LOQ	<LOQ	0.001
CBGa	<LOQ	<LOQ	<LOQ	<LOQ	0.001
CBL	<LOQ	<LOQ	<LOQ	<LOQ	0.001
CBN	<LOQ	<LOQ	<LOQ	<LOQ	0.001
Δ8-THC	<LOQ	<LOQ	<LOQ	<LOQ	0.001
Δ9-THC	0.003	0.029	0.029	10.321	0.001
THCa	<LOQ	<LOQ	<LOQ	<LOQ	0.001
THCVa	<LOQ	<LOQ	<LOQ	<LOQ	0.001

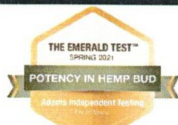
Method: HPLC
Total THC = THCa * 0.877 + Δ9-THC
Total CBD = CBDa * 0.877 + CBD

Total Cannabinoids represents the sum of all cannabinoids in the table above.
Results are reported on a dry weight basis: Cannabinoid % / (1.0 - moisture content % / 100) = Dry weight cannabinoids %
LOQ = Limit of Quantitation

Summary

Pass
Microbials

4150 98th Ave S
 Fargo, ND
(888) 897-4367
www.hempinspection.com



John Schmidt

John Schmidt
Analytical Chemist



Confident LIMS
All Rights Reserved
(866) 506-5866

This product has been tested by Adams Independent Testing using valid testing methodologies. Values reported apply only to the product tested and only as the sample was received. Adams Independent Testing makes no claims as to the efficacy, safety, or other risks associated with any detected or nondetected level of any compounds reported herein. This Certificate shall not be reproduced except in full, without the written approval of Adams Independent Testing. Test results that are Pass/Fail are reported using the Oregon Health Authority, Public Health Division - Chapter 333-007-0320, effective 1/1/2021. Results above the Limit will be considered Fail and will be in red. This is for informational purposes only and can be changed upon request. Measurement Uncertainty is not used for pass/fail conditions but available upon request.

Utepils Brewing

255 Thomas Ave N, Suite 700
Minneapolis, MN 55405
eric.harper@utepilsbrewing.com
(612) 249-7800

Sample: 2601AIT0033.0066

Strain: N/A
Batch#: Canned on 1/12/2026 Expires on 1/12/2027; Batch Size: g
Sample Received: 01/16/2026; Report Created: 04/09/2026

Bandwagon Key Lime 10mg

Ingestible, Beverage



Microbials

Date Tested: 01/20/2026

Pass

Analyte	Limit	Result	Status
Salmonella	CFU/g	CFU/g	
Shiga Toxin-producing E. coli (STEC)	1	Not Detected	Not Present
Bile-Tolerant Gram-Negative Bacteria	100	<LOQ	Not Present



Method: qPCR

4150 98th Ave S
Fargo, ND
(888) 897-4367
www.hempinspection.com



John Schmidt
Analytical Chemist

Confident LIMS
All Rights Reserved
(866) 506-5866

This product has been tested by Adams Independent Testing using valid testing methodologies. Values reported apply only to the product tested and only as the sample was received. Adams Independent Testing makes no claims as to the efficacy, safety, or other risks associated with any detected or nondetected level of any compounds reported herein. This Certificate shall not be reproduced except in full, without the written approval of Adams Independent Testing. Test results that are Pass/Fail are reported using the Oregon Health Authority, Public Health Division - Chapter 333-007-0320, effective 1/1/2021. Results above the Limit will be considered Fail and will be in red. This is for informational purposes only and can be changed upon request. Measurement Uncertainty is not used for pass/fail conditions but available upon request.